

## **Marches Mosses BogLIFE Project      LIFE15/NAT/UK/000786**

**Invitation to Tender: All ability footpath and weed suppressant for Bird Hide at Morris Bridge Fields, Whixall.**

### **Overview of Shropshire Wildlife Trust (the contracting organisation)**

Shropshire Wildlife Trust is a charity founded in 1962 and dedicated to the conservation of Shropshire's wildlife species and habitats. The Trust plays an important role in providing information and education for all ages on how to observe, enjoy and protect wildlife. The Trust owns/manages 40 nature reserves throughout Shropshire. Its headquarters is also a visitor centre in Shrewsbury.

Shropshire Wildlife Trust is a registered charity number 212744 and a company registered in England and Wales, number 729746. Registered Address 193 Abbey Foregate, Shrewsbury, SY2 6AH [www.shropshirewildlifetrust.org.uk](http://www.shropshirewildlifetrust.org.uk)

### **Project Background**

The Marches Mosses BogLIFE project (LIFE15 NAT/UK/000786) is a five year project running from 1 October 2016 to 31 December 2021. The project aims to restore Britain's third largest lowland raised bog within the Fenn's, Whixall & Bettisfield Mosses and Wem Moss NNRs (National Nature Reserve) near Whitchurch, Shropshire and Wrexham in Wales. The LIFE project is led by Natural England working in partnership with Natural Resources Wales and Shropshire Wildlife Trust. The multi-million pound project is supported by an EU LIFE grant and The National Lottery Heritage Fund.

More information can be found at [www.themeresandmosses.co.uk](http://www.themeresandmosses.co.uk)

The partnership will restore lowland raised peatbog and marginal fen habitat but also improve the intellectual and physical access to the mosses. This will involve new facilities, such as a viewing platform and bird hide, as well as a range of interpretive materials for visitors to the Mosses.

An area of land has been purchased which originally formed the edge of Whixall Moss (lagg habitat). This has become naturally wet over recent years and has become one of the best areas for wildfowl and wetland birds in North Shropshire. A water management scheme has been designed which will enable the water levels across the land to be managed to afford optimum conditions for a range of wetland birds, wildfowl and the creation of wetland habitat for other wildlife. In order to afford better interaction between the wetland habitat and visitors a bird-hide is included in the design.

This tender invitation is in addition to that for the construction of a bird hide and that for the engineering works for the water management scheme as outlined above.

**Restoring Marches Mosses BogLIFE Project (LIFE15 NAT/UK/000786)**



## Tender location

Morris' Bridge Fields are located to the west of the dispersed settlement of Whixall close to the Welsh Border. They are accessed from Moss Lane which leads to Morris' Bridge with the subject field located on the left-hand side of this lane.

The nearest Car Park is at Morris Bridge (a short walk from Morris Bridge Fields) which is 5.3 miles north of Wem and 6.5 miles south west of Whitchurch. The postcode for Morris Bridge car park is SY13 2RX.

## Specification

This contract is part of a wider scheme to develop a wetland reserve, for which the engineering works contract and bird hide contract have been let. This contract will need to follow on closely after the hide installation.

See Appendix 1 for the masterplan of the scheme and Appendix 2 for detail drawings of the footpath and hide.

The contract has 2 elements;

### 1. Weed suppressant

To provide and install a suitable geotextile weed suppressant fabric on the slopes around the hide as shown in Appendix 2, pegged down and then covered in 20mm single size shingle.

### 2. Footpath

Install the footpath from car park to the hide – see Appendix 2, 3 and 4. Path to have timber edgings on each side with suitable drainage gaps. The path will be 150mm thick crushed stone to type 1 standard with a topping of 50mm thick 6mm to dust crushed stone suitably compacted to enable access for all – eg wheelchairs, pushchairs, walking frames. The stone needs to be granite.

A site meeting is available, please contact Helen Trotman on 01743 284297 or [helent@shropshirewildlifetrust.org.uk](mailto:helent@shropshirewildlifetrust.org.uk)

This contract will need to be fulfilled as soon as the bird hide construction is complete which is scheduled for October / November 2021. Contractors must be available to complete the works within this timeframe.

## Timescales

Activity	Date / time
Issue of Contract Notice / availability of ITT documents	14 <sup>th</sup> July 2021
Deadline for submission of ITT responses by potential suppliers (Tender Response Deadline)	5pm on 4 <sup>th</sup> August 2021
Contract offered to winning contractor	6 <sup>th</sup> August 2021

Restoring Marches Mosses BogLIFE Project (LIFE15 NAT/UK/000786)



## Tender Response

Shropshire Wildlife Trust exists to protect wildlife for the future; sustainability is at the heart of the Trust's activities. However, we recognise that through our operations we can have an adverse impact on the environment. We will therefore seek to minimise any negative environmental impacts and to achieve continuous improvement in our environmental performance.

We seek tenders that are in keeping with our Environmental Policy. For further information please see our Environmental Policy and our Environmental Sustainability Policy (Appendix 5 and 6)

Please supply a response including:

- A covering letter explaining your past experience and suitability for the contract along with examples of previous work and references
- An overview of your methodology and approach
- Detail of the materials you will use, how you will meet the brief, what practises will support SWT's environmental considerations
- What your availability is for completing the work
- Project schedule with milestones
- Total cost (inc. VAT if relevant) with itemised quotation
- On all documents please quote: Marches Mosses BogLIFE Project (LIFE15 NAT/UK/000786)

Your tender response must remain open for acceptance by SWT for a period of 90 days from the Tender Response Deadline. A tender response not valid for this period may be rejected. The successful supplier will be required to complete an approved contractor's questionnaire before the contract can be let.

Quotes should be returned by email to [helent@shropshirewildlifetrust.org.uk](mailto:helent@shropshirewildlifetrust.org.uk)

## Criteria

Quotes will be scored against the following criteria:

- Ability to deliver the works (proven track record, relevant past experience and availability) – 50%
- Cost – 45%
- Empathy of the Trust's environmental sustainability policy and environmental procurement policy – 5%

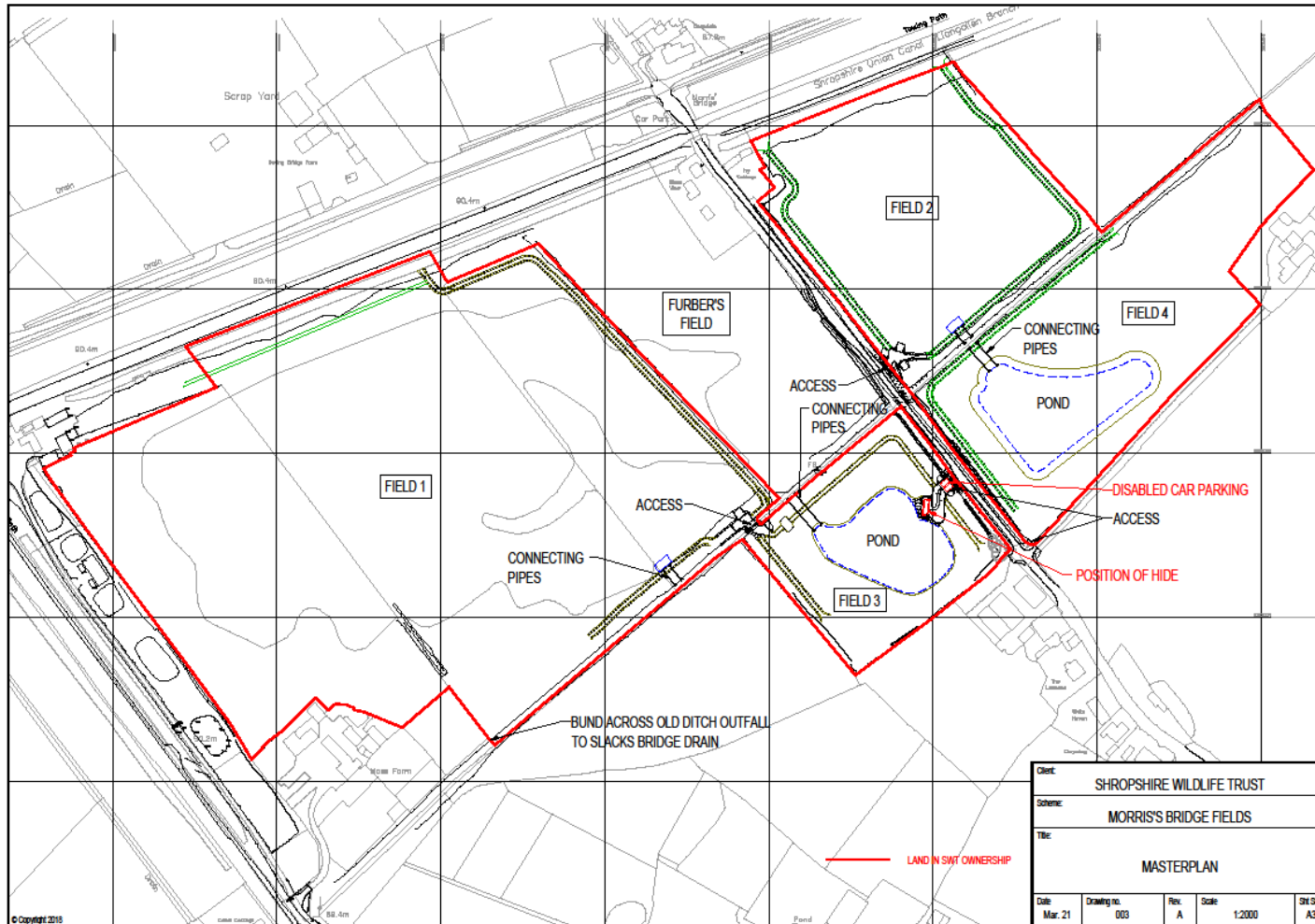
**On all documents please quote:  
Marches Mosses BogLIFE Project (LIFE15 NAT/UK/000786)**

Restoring Marches Mosses BogLIFE Project (LIFE15 NAT/UK/000786)



**Shropshire  
Wildlife Trust**

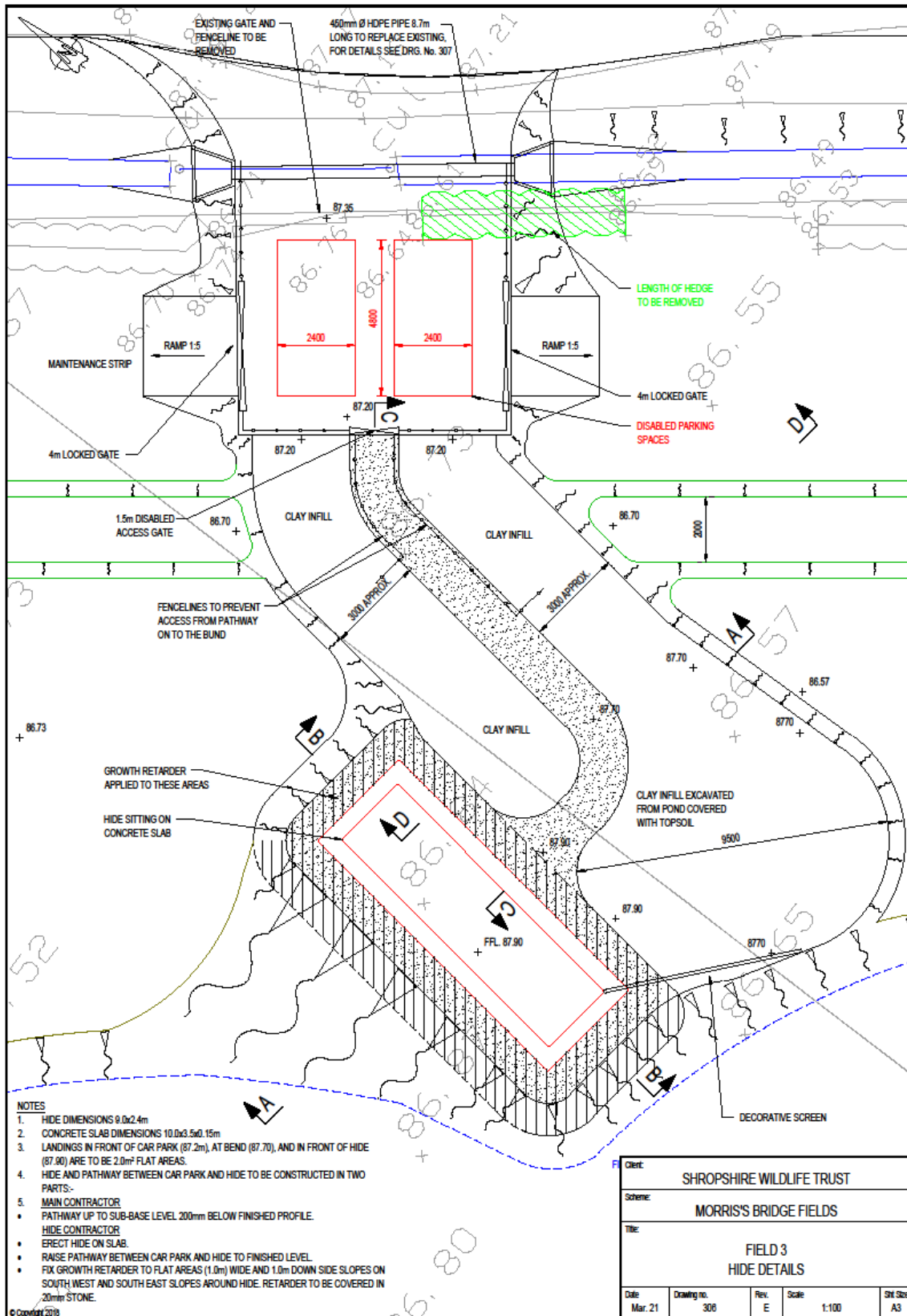
## Appendix 1 – Masterplan



Restoring Marches Mosses BogLIFE Project (LIFE15 NAT/UK/000786)



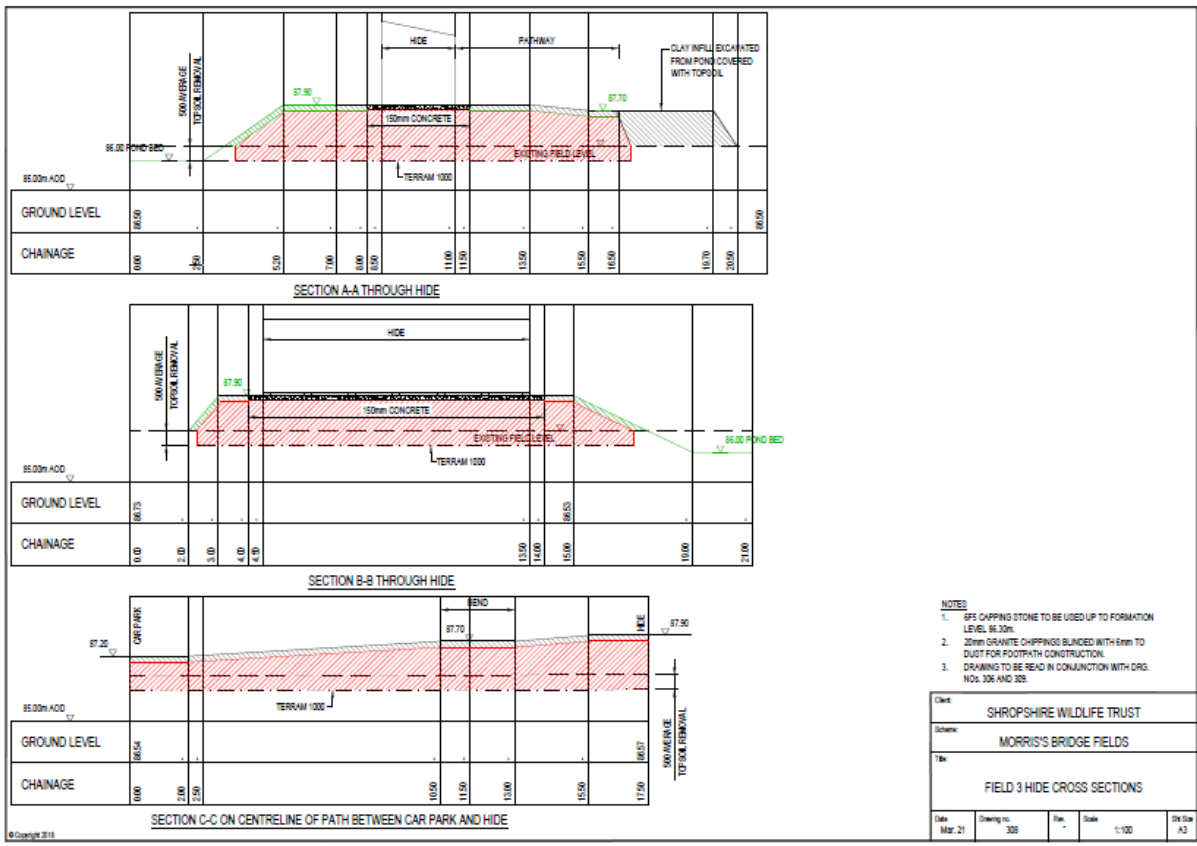
## Appendix 2 – Field 3 Hide details



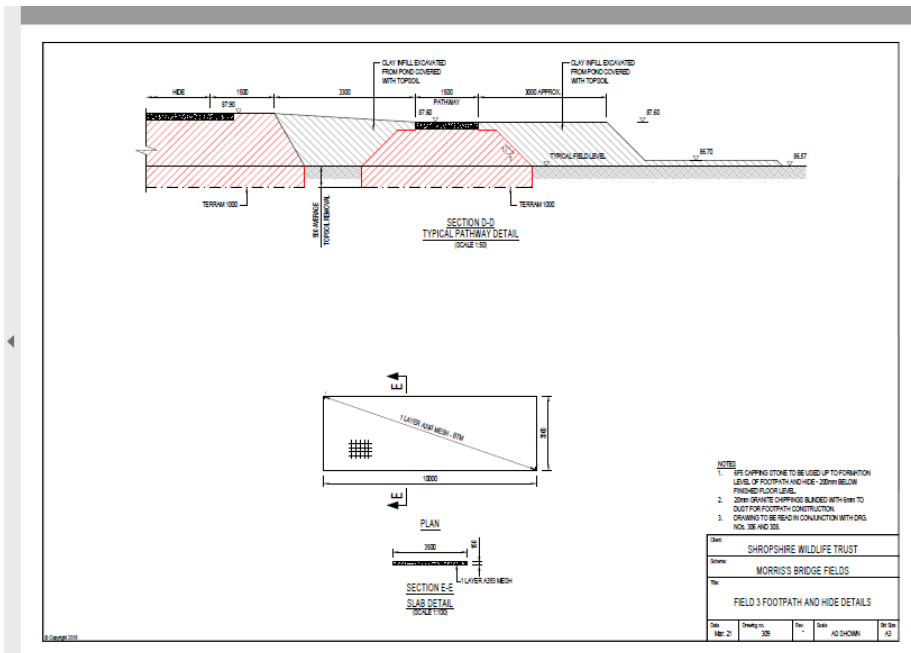
Restoring Marches Mosses BogLIFE Project (LIFE15 NAT/UK/000786)



## Appendix 3 Hide and Footpath cross sections



## Appendix 4 Hide foundation and footpath details



Restoring Marches Mosses BogLIFE Project (LIFE15 NAT/UK/000786)



## Appendix 4 – Shropshire Wildlife Trust Environmental Policy

Shropshire Wildlife Trust is committed to the adoption of environmentally responsible policies and practices, linking directly from our Mission Statement objective of protecting wildlife and natural places throughout Shropshire. The Trust is committed to ensuring that any of its activities which have negative environmental impacts are minimised, whilst activities with positive impacts are maximised. At the same time all its policies, processes, procedures and activities will comply fully with all environmental legislation. Specifically, we will:

- Maximise biodiversity benefits within all our activities, promoting the use of native and/or local provenance seed and plants where possible.
- Promote reduction in the consumption of all materials whilst encouraging re-use and recycling wherever possible, particularly with respect to paper.
- Minimise our use of vehicle fuel, by sharing cars and using public transport where possible. We will ensure our fleet is serviced to ensure maximum fuel efficiency.
- Manage energy use in all areas of the business.
- Continually strive to prevent pollution, and minimise waste at all times.
- Purchase equipment/stationery and other materials that are either recycled, use recycled materials or can be recycled by an appropriate method.
- Place more of our business with suppliers who minimise the impact of their activities on the environment, particularly those who operate take-back schemes for office equipment and stationery.
- Promote environmental awareness and responsibilities to all Shropshire Wildlife Trust employees, including volunteers and students.
- Strive to continually improve our environmental performance.

Restoring Marches Mosses BogLIFE Project (LIFE15 NAT/UK/000786)



## Appendix 5 – Shropshire Wildlife Trust Environmental Sustainability Policy

Shropshire Wildlife Trust exists to protect wildlife for the future; sustainability is at the heart of the Trust's activities. However, we recognise that through our operations we have an adverse impact on the environment. We will therefore seek to minimise any negative environmental impacts and to achieve continuous improvement in our environmental performance.

As biodiversity is the core business of the Trust, this is not covered here. This policy covers the wider environmental impacts which the Trust needs to consider.

### 1. ENVIRONMENTAL LEGISLATION

**The Trust will keep abreast of and comply with all environmental legislation.**

- *Staff will keep up to date with environmental legislation, integrate changes into policies and procedures and communicate these to staff/volunteers/contractors*
- *We will undertake environmental impact assessments for major projects*

### 2. EDUCATION & INFORMATION

**The Trust will raise awareness of environmental issues amongst staff, volunteers and members and encourage the use of best environmental practice by:**

- *Communicating the sustainability policy to all existing staff and to all new starters as part of the induction process*
- *Raising awareness of sustainability amongst our members*
- *Acting as an advocate for sustainability when talking to partners*

### 3. PURCHASING & FINANCE

**Sustainability will be an important consideration for the Trust when making decisions regarding the purchase of goods and services. We will:**

- *Purchase from/invest in companies that have strong environmental policies and performance and a good record of corporate responsibility*
- *Purchase products which have environmental/sustainability accreditation e.g. FSC timber*
- *Purchase goods which are recycled/recyclable where possible*

### 4. WASTE

**The Trust will identify its waste streams and seek to minimise their environmental impact. We will:**

- *Operate according to the 4 Rs – reduce, reuse, repair, recycle*
- *Ensure vehicles, machinery, tools and equipment are regularly maintained to extend lifespan*

### 5. TRANSPORT

**The Trust will seek to reduce the environmental impacts of transport being used directly or indirectly as a result of Trust operations. We will:**

- *Purchase goods and services locally*
- *Promote the use of public transport/bicycle by visitors to our reserves*
- *Investigate fuel efficient/low emission options when sourcing new Trust vehicles*
- *Encourage staff to use public transport to attend training courses, conferences etc*
- *Seek to avoid travel where staff can practically use teleconferencing*

### 6. ENERGY USE

Restoring Marches Mosses Bog LIFE Project (LIFE15 NAT/UK/000786)





**The Trust will seek to reduce energy use resulting from its operations and to support the use of renewable energy where this does not conflict with the objective of protecting wildlife. We will:**

- *Use low energy lighting in Trust offices*
- *Reduce electricity use through e.g. ensuring lights are turned off when offices are not in use, turning off computers, printers etc when not in use*
- *Seek to use an energy supplier with a renewable energy price plan*
- *Ensure that Trust buildings use energy efficiency/renewable energy technology where possible*

## **7. POLLUTION**

**The Trust will seek to minimise all forms of pollution resulting from its activities. We will:**

- *Buy non-polluting products wherever possible e.g. cleaning products, lubricants*
- *Record and monitor use of pesticides and review policy regularly*
- *Control burning/bonfires on reserves*

## **8. WATER**

**The Trust will seek to minimise the use of water in its operations. We will:**

- *Ensure any new buildings incorporate e.g. grey water recycling, low flush toilets*
- *Use water-efficient dishwashers and water heaters*

## **9. BUILDINGS**

**The Trust will maintain its buildings to a high environmental standard. We will:**

- *Ensure they provide a comfortable working environment*
- *Respect and conserve their heritage features*
- *Integrate wildlife opportunities into the management of buildings and their grounds*

## **10. MONITORING AND REVIEW**

**The Trust will monitor its environmental performance and undertake regular reviews of the sustainability policy.**

- *Monitor the use of electricity and other fuels*
- *Monitor paper use through purchasing system*

Restoring Marches Mosses BogLIFE Project (LIFE15 NAT/UK/000786)

